

# VoIP Gateway

Venus 2908

Venus 2916

Venus 2924

Venus 2932

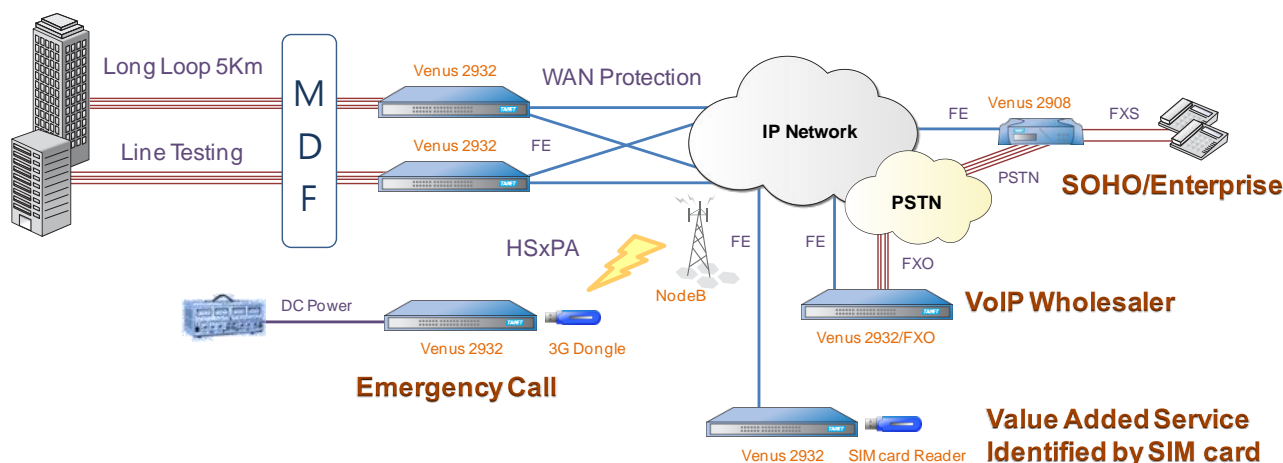


- Selectable in SIP, MGCP and MEGACO protocol
- SRTP advanced security features
- Support 3GPP SIP features
- Long reach up to 5 Km
- GR-909 Line test function
- Interactive Voice Response (IVR)
- Auto Provision feature with encryption
- Dual WAN-links for protection (Venus 2916/2924/2932)
- T.30 and T.38 compliant
- Line reversal and metering tone (16KHz)
- Ethernet switch function with QoS and VLAN
- Advanced calling features, 3-Way Conference with/without media server, call parking and more
- WEB GUI for ease of configuration
- SNMP and TR-069 supported
- 3 IPs/VLANs for Management/Voice Signaling/Voice traffic\*
- USB port reserved for future applications\*

The brand new Venus 29xx Series analog VoIP gateways are feature-rich and cost-effective products designed for telecom operators to provide telephony services with security-enhanced capabilities in the modern complex networks.

The Venus 29xx Series VoIP Gateway empowers service providers delivering carrier-class IP Centrex service over a Total-IP NGN / 3GPP IMS infrastructure in a more secured way. With SRTP (Secured Real-Time Protocol) and HTTPS-enabled features, the voice transmission is secured with better protection against the interferences on the Internet.

The Venus gateway provides a connection platform between traditional POTS lines and the Internet. Over various broadband technologies including xDSL, HFC, wireless and fiber, the Venus 29xx Series carries toll quality voice, fax and data traffic simultaneously in a cost effective way. Additionally, the Venus 29xx Series supports intelligent features like long loop, line testing, polarity reversal, caller ID, call transfer, call waiting and 3-way calling. The ideal applications include MTU/MDU, virtual PBX, IP Centrex and hosted telephony services.



## Headquarters

No.25, Alley 15, Lane 120, Sec. 1.  
 Nei-Hu Rd, 114 Taipei, Taiwan  
 TEL: 886-2-26583000  
 FAX: 886-2-26583232  
 E-mail: sales@tainet.net

### Model

- Venus 2908, 8S: 8 FXS, 1 PSTN, 2 Ethernet ports
- Venus 2908, 4S4O: 4 FXS, 4 FXO, 2 Ethernet ports
- Venus 2916: 16 FXS, 5 Ethernet ports, 1 USB
- Venus 2924: 24 FXS, 5 Ethernet ports, 1 USB
- Venus 2932: 32 FXS, 5 Ethernet ports, 1 USB

### Call control protocol

- SIP (RFC-3261), MGCP 1.0/0.1/NCS1.0, MEGACO (H.248)
- Real-time Control Protocol (RFC-1889) & RTCP
- 3GPP SIP supported

### Voice Feature

- G.711(a/u law), G.723.1, G.726, G.729 a/b
- Voice Activity Detection (VAD)
- Silence Suppression
- Confirm Noise Generation (CNG)
- Adaptive Jitter Buffer
- Echo Cancellation (ITU G.165&G.168)
- Packet Loss Compensation
- Adjustable Gain Control
- RTP filter

### Analog Voice Port

- Telephone Interface: RJ-11
- In-Band DTMF, Out of Band DTMF Relay (RFC-2833)
- Pulse or DTMF dialing
- CLID: FSK-Bellcore 101/102, FSK-ETSI, DTMF, Blocking, Calling Name & Data, POTS CLID Detection
- DTMF Tone Detection & Generation
- Modem Relay
- Priority Reversal Detection (FXO) & Priority Reversal Generation (FXS) PSTN Cadence Auto Detection
- Metering Signaling Generation for Coin Phone(FXS)\*
- GR-909 Line test function

### Calling Features & Management

- 3 IPs/VLANs for Management/Voice Signaling/Voice traffic\*
- Call Hold, Waiting, Transfer, Forward, Return & Park
- 3-Way Conference w/wo Media Server
- Configurable FLASH-HOOK Timing
- DID (Direct Inward Dialing in FXO), DOD (Direct Outward Dialing in FXO)
- Internal Phone Book (SIP)
- Hot/Warm Line
- Deny Second Stage Dialing (FXO)
- E.164 supported
- Interactive Voice Response (IVR)
- Ring Priority (Hunting, Simultaneous, Sequential)
- Call Interception
- Outbound Proxy Support
- Wildcard Register (By Group) / Line Register (By Port)
- Soft-switch Backup Mechanism Support
- Speed Dial\*
- Advanced Digit-Map
- Manipulation Dialing
- Video Message Waiting Indication (VMWI)
- Inner Dialing support (MGCP/MEGACO)
- Max. Concurrent Call Limitation: Summary/Incoming/Outgoing

\*\*\* future available

### Data Features

- WAN: Static IP, PPPoE, DHCP/BootP Client
- LAN: Bridge / Router
- Static Routing Table
- NAT Pass Through, STUN, uPnP\*
- Static NAT/NAPT Mapping
- DHCP Server
- DNS/DDNS

### Security

- SIP Authentication: MD5
- Media: Security RTP
- WEB interface: HTTPS
- DoS prevention
- MGCP authentication: DH Key Agreement & MD5 Encryption
- Control: TLS\*, SIPS\*, IPSec\*

### QoS

- Port-Based VLAN/ 802.1Q VLAN-tagging
- DSCP/IP Precedence
- Guarantee VoIP Bandwidth

### System Management & Maintenance

- Console, Telnet, WEB (HTTP/HTTPS)
- Configuration Backup with Encryption
- Remote Firmware Upgrade (HTTP/TFTP/HTTPS)
- SNMP v1/v2
- Auto Provision (HTTP/TFTP)
- TR-069
- System Log / Call Log
- UPnP service\*

### Safety Certification

- CE
- FCC part 15 class A
- FCC part 68, UL.

### Dimension

- Venus 2908: 245(W) x 200(D) x 60(H) mm
- Venus 2916/2924/2932: 442(W) x 287(D) x 44(H) mm

### Power

- Venus 2908: External AC/DC power adaptor
- Venus 2916/2924/2932: Built-in AC or DC power
  - AC 110V ~ 240V, 50 ~ 60Hz
  - DC -36V ~ -72V

### Operating Environment

- Operational: 0°C ~ 50°C
- Storage: -10°C ~ 70°C
- Humidity: 10% ~ 90% (non-condensing)

